

---

PRODUCT CATALOGUE

---

# Peripheral Equipment for IMM

---

ALLESØE CUSTOM MACHINERY

---

**allesøe**  
SPECIALMASKINER

---

## Allesoe Custom Machinery

---

At Allesoe Custom Machinery we design, develop, and produce customised machinery of the highest quality to ensure an efficient and impeccable injection moulding process for your production facility.

We consider industrial production a fundamental pillar of corporate and societal innovation, and in order to continuously push and progress originality within market development, any industrial production must be cost-effective, ever-evolving, and humanly resourceful.

---

**Allesoe's mission is to increase the productivity of industrial facilities so that our customers develop their competitive advantage and generate knowledge-based production jobs.**

---

Your industrial production equipment is our speciality and we strive to complete your processes by living up to our values:

### **Quality**

Our solutions are based on extensive experience and designed to meet your production challenges



### **Dedication**

We engage in active sparring with you throughout the project process

### **Thoroughness**

Our craftsmanship is customised and characterised by high levels of overall equipment efficiency

---

Evolving your injection moulding facility demands a number of integrated initiatives that in combination make up a greater cost-effective whole. To achieve a totality of combined solutions, we operate within three product categories each of which is matched your production needs.

### **Custom Machinery**

Customised machines that are individually CE marked, part of your completed production line or IMM

### **Custom Components**

Auxiliary equipment or embedded custom solutions and utilities that support your production processes

### **Servicing**

Assistant services and counselling to ensure your production facility's reliability

---

---

## Custom Solutions for your Injection Moulding Processes

---

Products from Allesoe are customised to perform and improve various functions in your production facility to excel your operations. Injection moulding is a complicated and time-consuming process that requires absolute attention to detail and operational data to uphold optimal moulding conditions. Therefore, peripheral and auxiliary equipment for injection moulding machinery must amplify the operator's tasks and demand minimum requirements from technicians.

---

### We develop and manufacture solutions that enhance your production performance within 7 parameters

---

#### OVERALL EQUIPMENT EFFICIENCY

Solutions that improve established production equipment and excel daily operations

- Minimise downtime
- Maximise output of production hours
- Increase reliability of production equipment

#### PROCESS EFFICIENCY AND LEAN

Solutions that amplify the output of your processes and consolidate LEAN principles

- Optimise operational processes
- Simplify and standardise production procedures
- Advance production flow

#### REDUCTION OF REJECTS

Solutions that facilitate low error rates and heighten quality output

- Ensure quality output
- Optimise output of machine-hours
- Ration preventive maintenance hours

#### ENERGY OPTIMISATION

Solutions that incorporate low energy consumption

- Reduce energy costs
- Lower carbon emissions
- Sustain corporate climate strategy

#### PRODUCTION MAINTENANCE

Solutions that streamline maintenance activities and inhibit depreciation of your production equipment

- Reduce maintenance costs
- Improve repair processes
- Limit unscheduled outage hours

#### PERSONNEL SAFETY AND ERGONOMICS

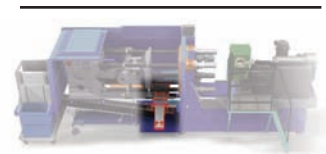
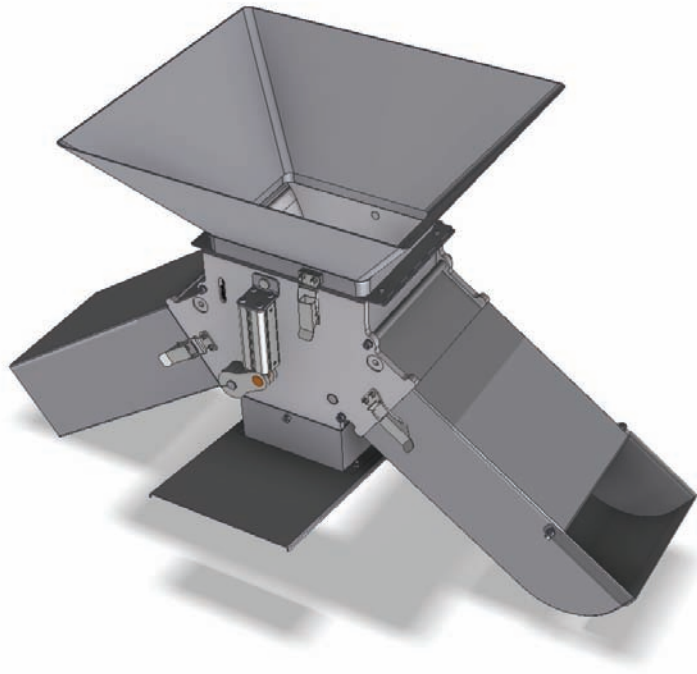
Solutions that safeguard production personnel and consolidate safety procedures

- Enhance safety measures
- Improve work conditions
- Reduce personnel turnover

#### PERSONNEL EDUCATION

Solutions that aid personnel in sustaining operating and maintenance procedures to attain proper handling of production equipment

- Increase personnel productivity
- Advance usage of production equipment
- Lengthen lifespan of production equipment



OVERALL EQUIPMENT EFFICIENCY  
PRODUCTION MAINTENANCE  
PERSONNEL SAFETY AND ERGONOMICS

---

## Distributor Chute - ASM-PNE-DCo1

---

Ensure precision discharge of plastic mould parts and exact distribution between good shots, sample shots and rejects

---

At Allesoe, we have extensive experience in designing and manufacturing chute systems for Injection Moulding Machines, and the newest edition of Distributor Chute Systems is the ASM-PNE-DCo1. The system is directly integrated with the injection moulding machine to direct good shots, sample shots and rejects into designated compartments without increasing cycle times or use of a part picker.

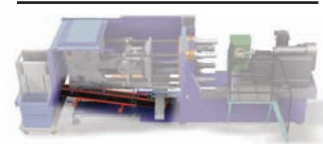
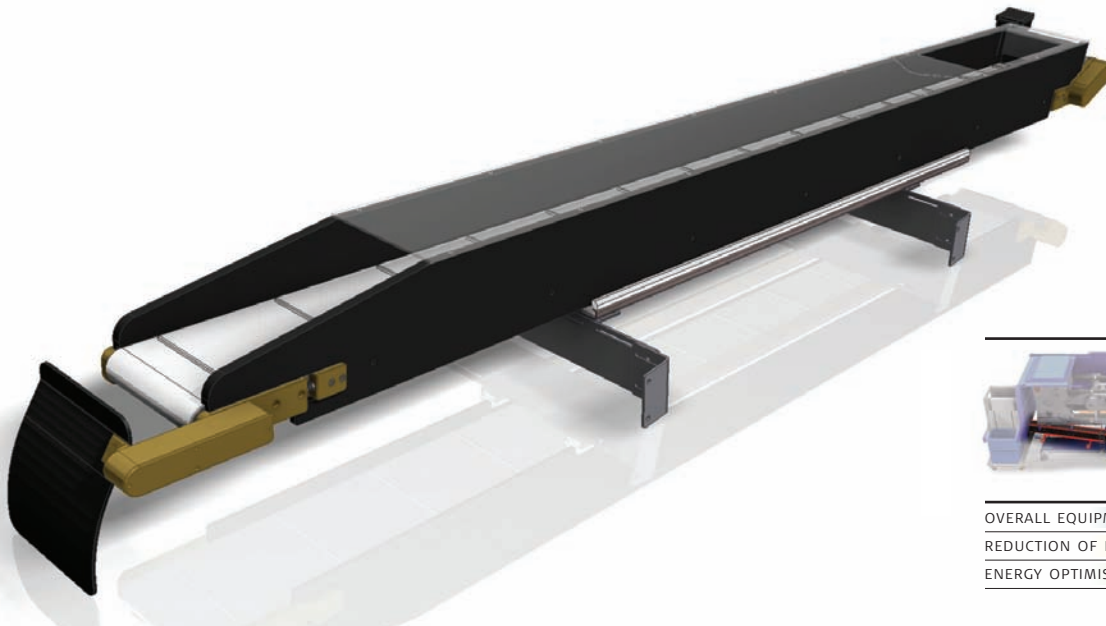
---

### Standard specifications of ASM-PNE-DCo1

- Chute scalable to cavity number
- Three-way discrimination (good shots, sample shots and rejects)
- Guaranteed discrimination of good shots and rejects
- Appropriate handling of sensitive mould articles
- Installation and set-up in less than an hour
- Solid construction
- Minimum maintenance requirements
- Protective shielding not needed
- Integrated pneumatic regulator for stabilised pressure

### Applications

- Polyurethane coating for optimising production output
- Low skirts
- Steeper funnels
- Displaced middle section for rack-and-pinion shape moulds



OVERALL EQUIPMENT EFFICIENCY
REDUCTION OF REJECTS
ENERGY OPTIMISATION

---

## Conveyor System - ASM-PNE-LCo1

---

Ascertain complete quality of plastic mould parts during transport with 33 % reduced energy consumption

---

The new Conveyor System from Allesoe is designed to secure maximum subject quality of plastic mould parts during transportation and can be supplied with a number of applications to suit your production set-up and needs. The Conveyor is installed inside the frame of the IMM and can be scaled in length and width to be applied to a variety of IMM. The maximum gap between belt and sidetrack is 1 mm, which limits the risk of causing stress-cracks, splits, chips and other deformations in the plastic mould parts during transport.

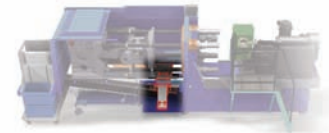
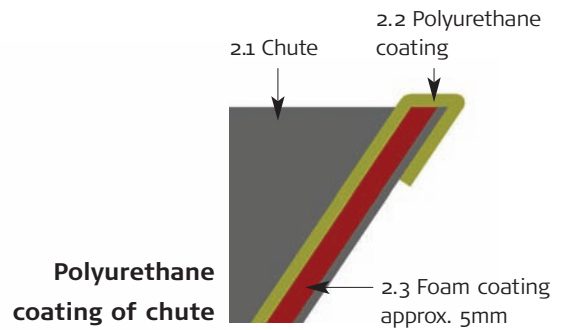
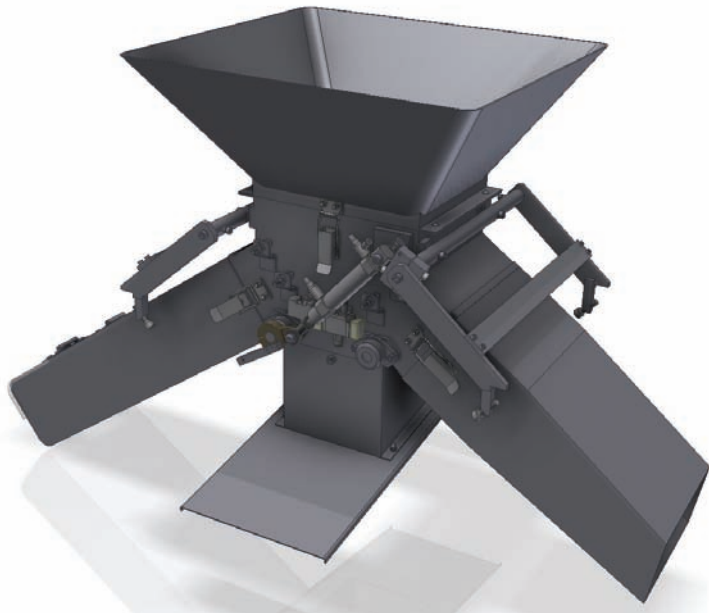
---

### Standard specifications of ASM-PNE-LCo1

- Protection of plastic mould parts from water or oil leaks (incl. shielding against capillary effect of oil)
- Appropriate handling of sensitive mould articles (1 mm max gap size to prevent minor mould parts from trapping)
- Modular construction scalable in length and width to a variety of IMM
- Adjustable and flexible suspension
- FDA approved belt
- 0,06 KW Lenze electrical engine with a long life span
- Installation and set-up in less than an hour
- Minimum maintenance requirements
- Protective shielding not needed

### Applications

- Subject distributor which disperses plastic mould parts evenly in discharge container optimising flow capacity (illustrated)
- Ionisation and / or cooling equipment to reduce static electricity and thermal degradation
- Chute and sorting systems for reject and shot sample (ASM-PNE-DCo1)
- Frequency converter (also useful for plastic mould parts that are susceptible to thermal degradation)
- Transportation wagon for easy installation and removal during maintenance



OVERALL EQUIPMENT EFFICIENCY
REDUCTION OF REJECTS
PRODUCTION MAINTENANCE
PERSONNEL SAFETY AND ERGONOMICS

## Distributor Chute System – KA-PNE-TR6

Validated and efficient processing of plastic mould parts with minimal installation and set-up hours

The Distributor Chute System from Allesoe has been validated in several productions around the world, and proven a highly cost-effective system for handling plastic mould parts.

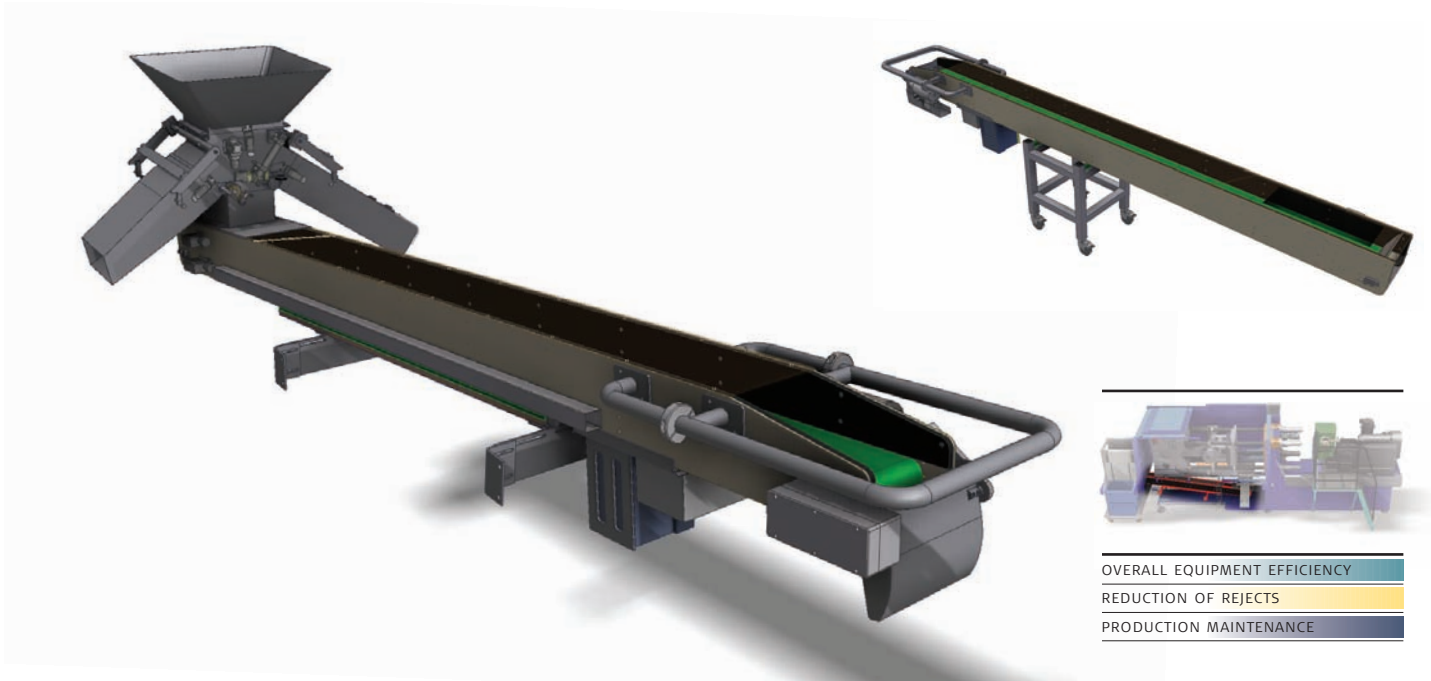
An innovation within this product line is the application of polyurethane coating to the chute, which prevents light plastic mould parts from bouncing onto the production floor, thereby minimising waste and preventing fall injuries. In addition, mould articles with low impact resistance, low strength or minimal impact modifiers are protected by the polyurethane coating.

### Standard specifications of KA-PNE-TR6

- Chute scalable to cavity number
- Three-way discrimination (good shots, sample shots and rejects)
- Guaranteed discrimination of good shots and rejects
- Endorsed by numerous Q/A
- Appropriate handling of sensitive mould articles
- Installation and set-up in less than an hour
- Solid construction
- Minimum maintenance requirements
- Protective shielding not needed

### Applications

- Manometer
- Polyurethane coating for optimising production output
- Low skirts (-50 mm)
- Steeper funnels
- Displaced middle section for rack-and-pinion shape



## Conveyor System – KA-PNE-TV6

Validated and secured transportation of plastic mould parts – Ascertain complete quality of plastic mould parts during transport and avoid time-consuming set-up activities

The Conveyor System from Allesoe is designed to secure maximum subject quality of plastic mould parts during transportation and can be supplied with a number of applications to suit your production set-up and needs.

### Standard specifications of KA-PNE-TV6

- Scalable in length
- Protection of plastic mould parts from water or oil leaks
- Appropriate handling of sensitive mould articles (1.5 mm max gap size to prevent miniature plastic mould parts from trapping)
- Endorsed by numerous Q/A
- Adjustable and flexible suspension
- 0,09 KW Lenze electrical engine with a long life span
- Solid construction
- Installation and set-up in less than a minute
- Minimum maintenance requirements
- Protective shielding not needed



**Conveyor Trolley  
ASM-PNE-CT01**

### Applications

- Subject distributor which disperses plastic mould parts evenly in discharge container optimising flow capacity
- Ionisation and/or cooling equipment to reduce static electricity and thermal degradation
- Chute and sorting systems for reject and shot sample
- Frequency converter (also useful for plastic mould parts that are susceptible to thermal degradation)
- Conveyor Trolley for easy installation and removal during maintenance





Static Discharge Station

Trolley for Granulate Container



PROCESS EFFICIENCY AND LEAN  
PERSONNEL SAFETY AND ERGONOMICS  
PERSONNEL EDUCATION

## Auxiliary Equipment for Granulate Containers

### Static Discharge Station – ASM-PNE-SDo1

Strengthen your facility's safety measures and optimise internal transportation of mould material

The Static Discharge Station removes electrically charged particles from granulate containers and thereby reduces the risk of injuring operators on the production floor. Some granulate containers weigh up to 100 kg, and they both represent a potential risk of severe static electric shock, and the risk of causing long-term hip and back injuries to operators, therefore it is sensible to handle the containers using a transportation trolley.

#### Standard specifications of ASM-PNE-SDo1 and ASM-PNE-TGCo1

- Optimal safety for operators
- Reduces the risk of electric shock
- Consolidates safety procedures
- Facilitates ergonomically correct handling of granulate containers
- Efficient transport of material containers
- Easy storage of auxiliary equipment

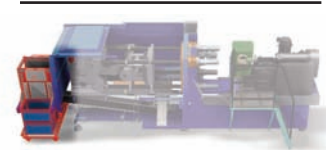
Storage Rack for Container Trolley



#### Applications

- Reed contact to verify position of container
- Trolley for Granulate Container ASM-PNE-TGCo1 (valuable in large facilities with extensive personnel mobility)
- Storage Rack for Container Trolley





OVERALL EQUIPMENT EFFICIENCY
PROCESS EFFICIENCY AND LEAN
PRODUCTION MAINTENANCE
PERSONNEL SAFETY AND ERGONOMICS

---

## Box Changer System – ASM-PNE-BCo1

---

### Reliable handling and protected storage of plastic mould parts

---

The Box Changer from Allesoe is an automatic box handling system that stores plastic mould parts in a protected environment. The system requires minimum supervision from operators, who can focus on uptime mould run and data collection without concern for overloading storeroom. During maintenance the Box Changer removes easily and with a multitude of applications, the system can be customised to match the specific requirements of your injection moulding processes.

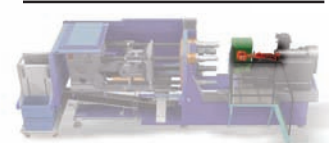
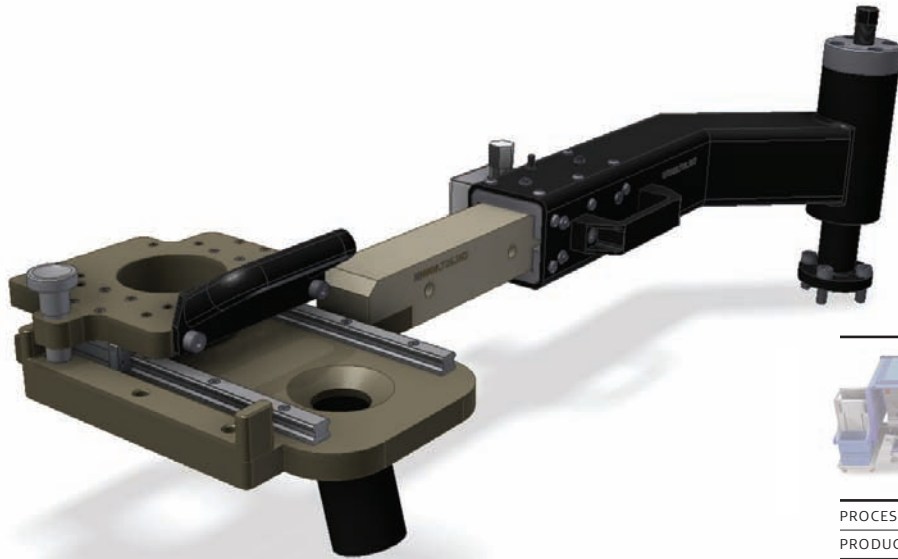
---

#### Standard specifications of ASM-PNE-BCo1

- Appropriate handling of sensitive mould articles
- Protection of plastic mould parts from dust and dirt
- Mobile unit to be removed during mould maintenance
- Solid construction
- Minimum maintenance requirements
- Protective shielding integrated
- Installation and set-up within minutes

#### Applications

- Integration of robot/part picker
- Pallet wagon for proper handling of stabled boxes
- Ionisation and/or cooling equipment to reduce static electricity and thermal degradation
- Buffer section for extended box-loading and longer cycle-time
- Single box un-loader
- Inspection elevator (Single box un-loader with box lift for ergonomically correct handling)
- Exhaustion for POM gases



PROCESS EFFICIENCY AND LEAN  
PRODUCTION MAINTENANCE  
PERSONNEL SAFETY AND ERGONOMICS

---

## Adjustable Material Arm - ASM-PNE-MA-60/530

---

Reduce set-up hours for mould run and repair through flexible adjustment of material hopper

---

The Material Arm is connected to the material hopper or autoloader, and can be adjusted according to the screw travel and material compartment. The arm is scalable in length and height so that it can be applied to a variety of injection moulding machines and screw settings.

---

### Standard specifications of ASM-PNE-MA-60/530

- Accelerates disassembly and assembly activities during mould exchange and maintenance
- Easy to manoeuvre due to ball bearings
- Carrying capacity up to 175 kg
- Solid construction
- Minimum maintenance requirements
- Easy Installation and set-up

### Applications

- Length settings
    - 625 mm - 865 mm
    - 528 mm - 735 mm
    - 565 mm - 785 mm
-



---

## Stairs for Injection Moulding Machine ASM-PNE-ST01

---

Promote personnel safety and cut repair costs

---

The Stairs grant operators easy and safe access to the material hopper and screw drive of the injection moulding machine. The railing can be supplied with various adjustable brackets for the control panel so that the operator can supervise the screw drive while performing operational adjustments.

Particularly repair activities are improved using the stairs. The railing can be detached to grant access to the barrel and feed screw so that disassembly and assembly activities are conducted faster whereby the technicians' repair hours are reduced.

---

### Standard specifications of ASM-PNE-ST01

- Accelerates disassembly and assembly activities during mould exchange and maintenance
- Facilitates safe manual filling of material hopper as well as access to hopper dryer and loader
- Flexibility of operations
- Ease of access to material hopper and screw drive
- Ease of cleaning and maintenance of material hopper
- Reduces maintenance hours

### Applications

- Adjustable brackets for the control panel
  - Brackets for external devices
  - Tool Tray for Stairs (ease of storage and access to auxiliary tools)
-

---

**Peripheral and auxiliary equipment from Allesoe Custom Machinery  
– a quality and cost-effective alternative to part pickers or robots  
for optimal injection moulding processes**

---

Contact us on +45 46 78 72 96 to find out how our customized solutions can improve the reliability of your production.

---

Allesoe Custom Machinery is a member  
of the Zero Carbon Network



---

Allesoe Custom Machinery · Hejnstrupvej 103  
Gundsomagle · 4000 Roskilde, Denmark  
Ph. +45 4678 7296 · [www.asm.dk](http://www.asm.dk) · [info@asm.dk](mailto:info@asm.dk)

---

